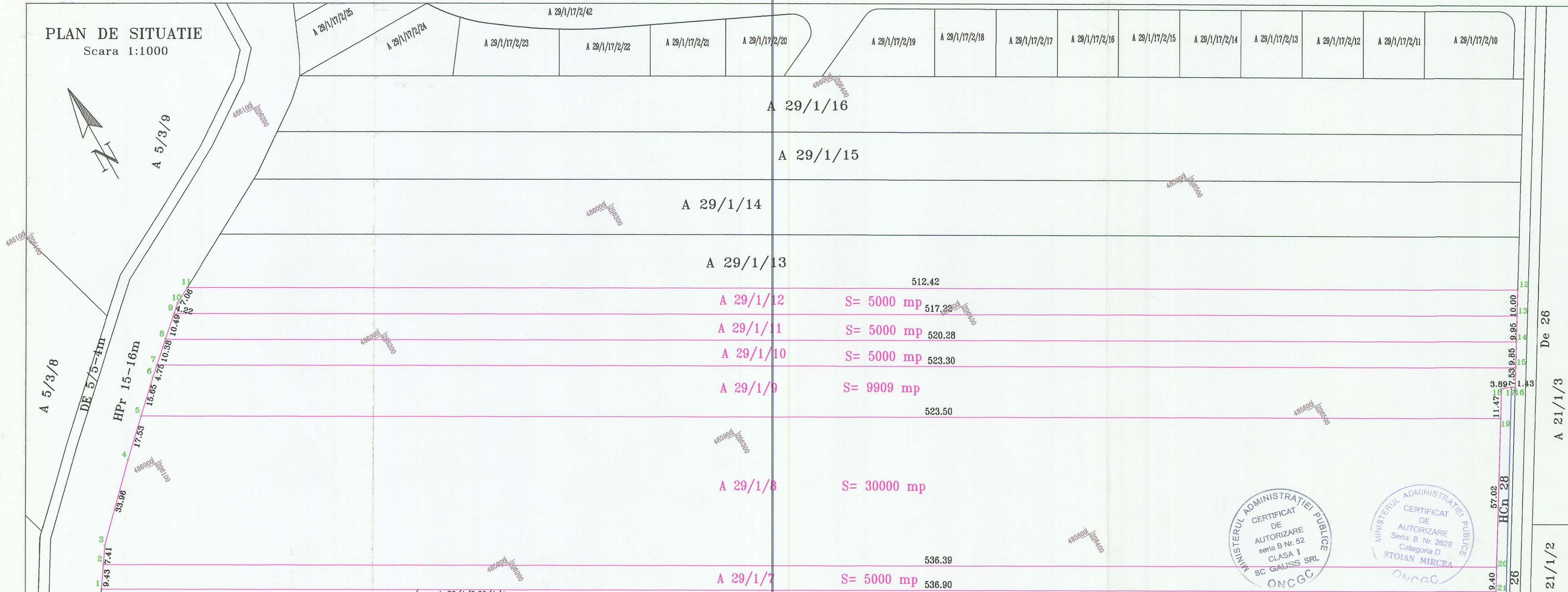


PLAN DE SITUATIE
Scara 1:1000



INVENTAR DE COORDONATE
Puncte de contur

Numar punct	X	Y
1	485976.058	206063.814
2	485976.058	206063.814
3	485982.204	206067.965
4	486006.439	206091.755
5	486018.593	206104.393
6	486029.442	206115.675
7	486032.625	206119.194
8	486039.587	206126.893
9	486046.620	206134.670
10	486049.450	206137.800

Numar punct	X	Y
11	486052.835	206143.995
12	485800.590	206590.033
13	485792.012	206584.888
14	485783.476	206579.768
15	485775.026	206574.700
16	485768.565	206570.824
17	485769.275	206569.663
18	485770.728	206565.980
19	485760.895	206560.075
20	485712.014	206530.717
21	485703.953	206525.875

Sistem de coordonate stereografic 1970
Responsabilitatea identificarii planului parcelar si a determinarilor topografice revine in totalitate persoanei juridice autorizate.

SEF PROIECT	Mircea STOIAN
INTOCMIT	Ing. D. HOMORODEAN
DESENAT	Ing. D. HOMORODEAN
VERIFICAT	Mircea STOIAN

Denumire proiect:		Documentatie tehnica pentru avize PUZ	
Beneficiari:		ISPAN MARTIN, ISPAN VIORICA, SZILAGYI GEZA, SZILAGYI CARMEN TUNDE, PER LUCIAN, PER CARMEN	
Scara:		1:1000	
Data:		August 2006	
Plansa nr. 1			



De 26
A 21/1/3
A 21/1/2
De 26
A 21/1/3

Nr. proiect
87/2006