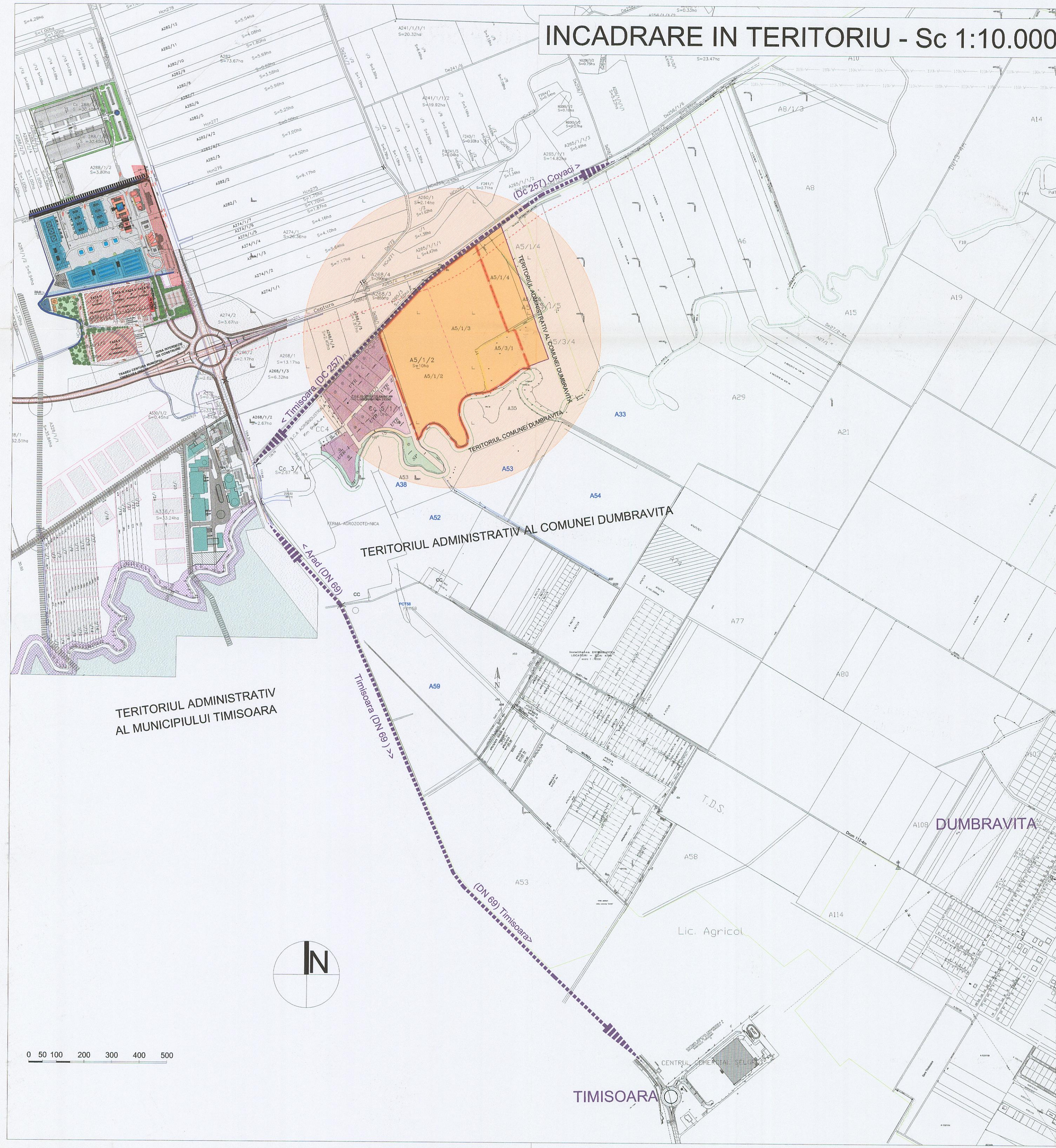
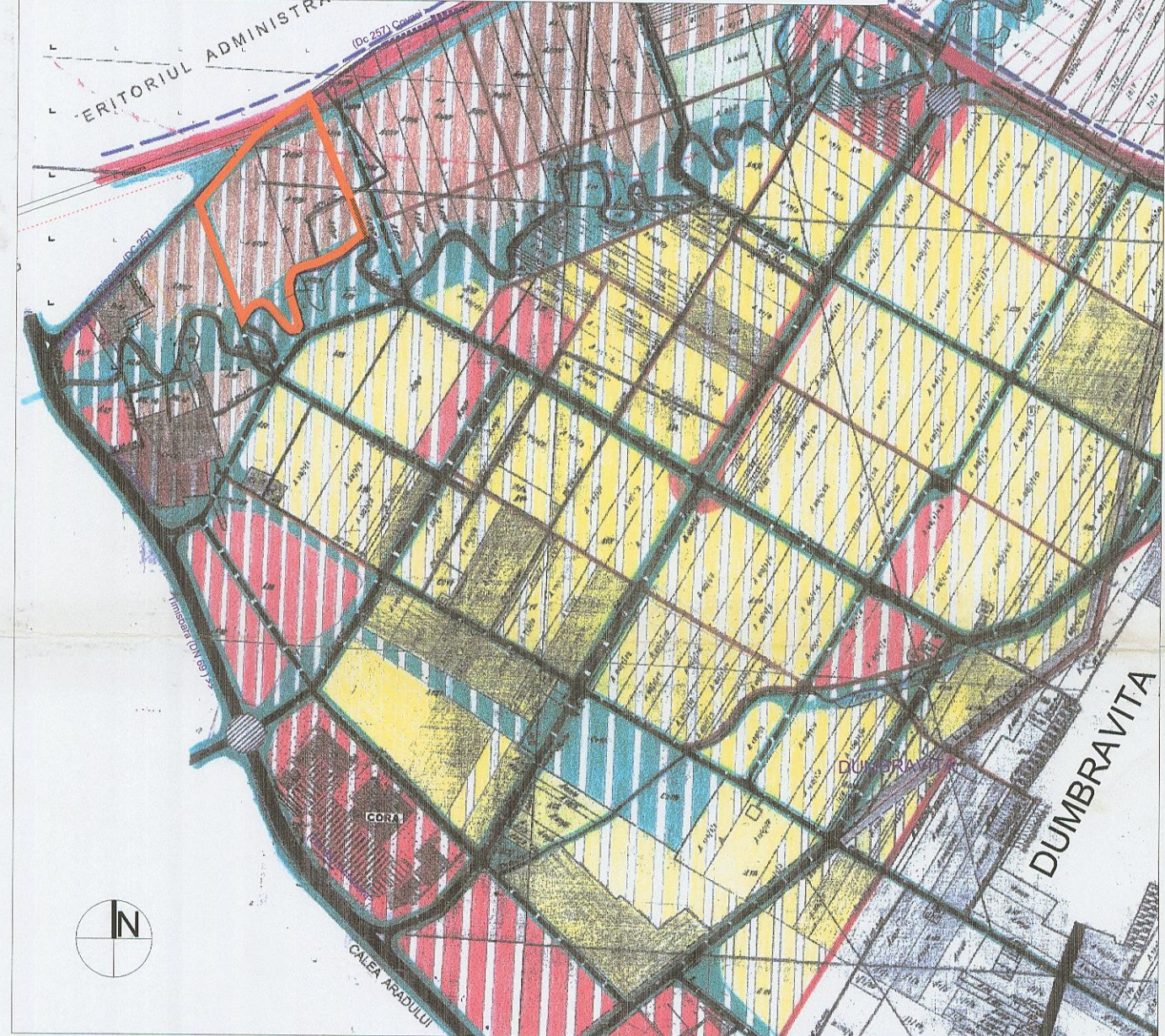





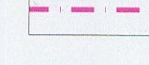

# INCADRARE IN TERITORIU - Sc 1:10.000



# INCADRARE IN P.U.Z. DIRECTOR (1:20.000) ZONA CE FACE OBIECTUL P.U.Z.



**LEGENDA**

-  IDENTIFICAREA ZONEI STUDIATE
-  LIMITA ZONEI STUDIATE
-  ACCES RUTIER
-  LIMITE PROPRIETATE
-  DRUM PROPU



<b>PILOT TEAM</b> proiectare pentru constructii		PROIECT: ZONA PENTRU SERVICII SI DEPOZITARE	numar proiect: 1.09/2005
Str. Carpati nr. 15, Timisoara		beneficiar: S.C. IRCO S.R.L., S.C. EURO ARC VEST S.R.L.	data proiect: 08/2005
desenat: Arh. Glad TUDORA	desenat: C.Arh. Alice NACU	amplasament: EXTRAVILAN DUMBRAVITA A5/1/2; A5/1/3; A5/3/1	faza: P.U.Z.
desenat: Arh. Laura MARCULESCU		denumire plansa: INCADRARE IN TERITORIU INCADRARE IN P.U.Z. DIRECTOR	scara: 1:10.000
			data: 02/2006
			numar plansa: 0.1